



# **CANADA'S INTEGRATED STRATEGY FOR RADIOACTIVE WASTE**

**Community Dialogue Session**

**2021**



# WELCOME



# WHY WE WANT TO HEAR FROM YOU



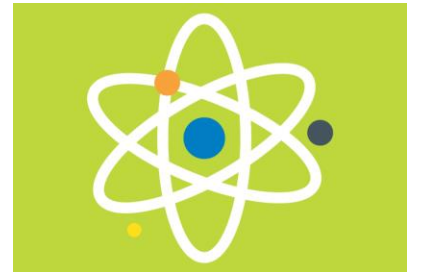
# NUCLEAR ENERGY



[https://youtu.be/e6IHV-xITjk?list=PLpHweZrkiq\\_vZaKF-uW4P7VIAB4nR06gv](https://youtu.be/e6IHV-xITjk?list=PLpHweZrkiq_vZaKF-uW4P7VIAB4nR06gv)

# AGENDA

1. Welcome
2. Presentation of background information
3. Pre-breakout session Q+A
4. Breakout sessions
5. Summary
6. Closing
7. Post-session Q+A



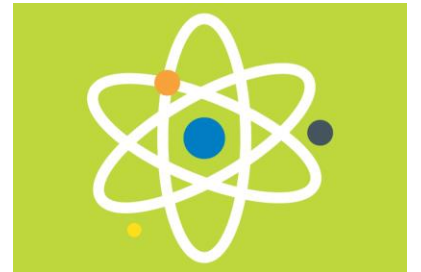
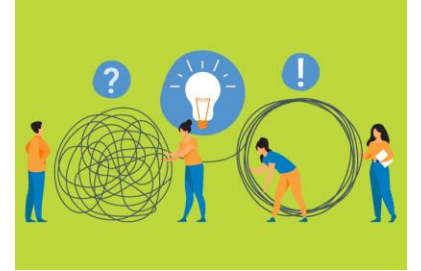


# **PRESENTATION**

# ISRW PROJECT

In November 2020, the Minister of Natural Resources Canada asked the NWMO to lead the development of an **integrated strategy on radioactive waste (ISRW)**

- Radioactive waste safely manage today
- Several long-term plans and projects exist
- Some gaps exist
- This strategy represents a **next step**



# INTERNATIONAL BEST PRACTICE

"Canada's low- and intermediate-level radioactive waste is **safely managed today** in interim storage.

An **integrated strategy** will ensure the material continues to be managed in accordance with international best practices over the longer-term. "

- Laurie Swami, president and CEO, NWMO



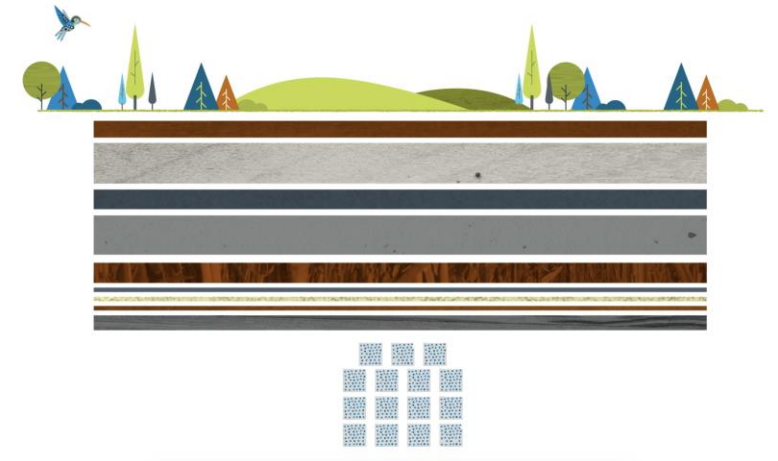
# WHAT WILL IT INCLUDE?



**Taking Stock of  
Current  
Waste Management  
Situation**



**Engaging on  
Options to Address  
the Gaps**



**Making  
Recommendations for  
Long-Term Management  
Solutions**



NWMO was asked to help



[radwasteplanning.ca](http://radwasteplanning.ca)  
[plandechetsradioactifs.ca](http://plandechetsradioactifs.ca)



Open, Transparent  
Engagement Process

20<sub>years</sub>

experience engaging  
**Canadians,**  
**Indigenous peoples**  
and **industry**

# TIMELINE





**Safety as overarching principle**



**Informed by the best available knowledge**



**Environment is protected**



**Respect Indigenous rights and treaties**

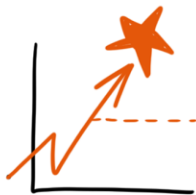


**Security must be ensured**

# GUIDING PRINCIPLES



**Be transparent and inform and engage the public**



**Make use of existing projects**



**Fiscally responsible**



**Meets or exceeds regulatory requirements**

# HOW OTHER COUNTRIES ARE MANAGING THEIR RADIOACTIVE WASTE

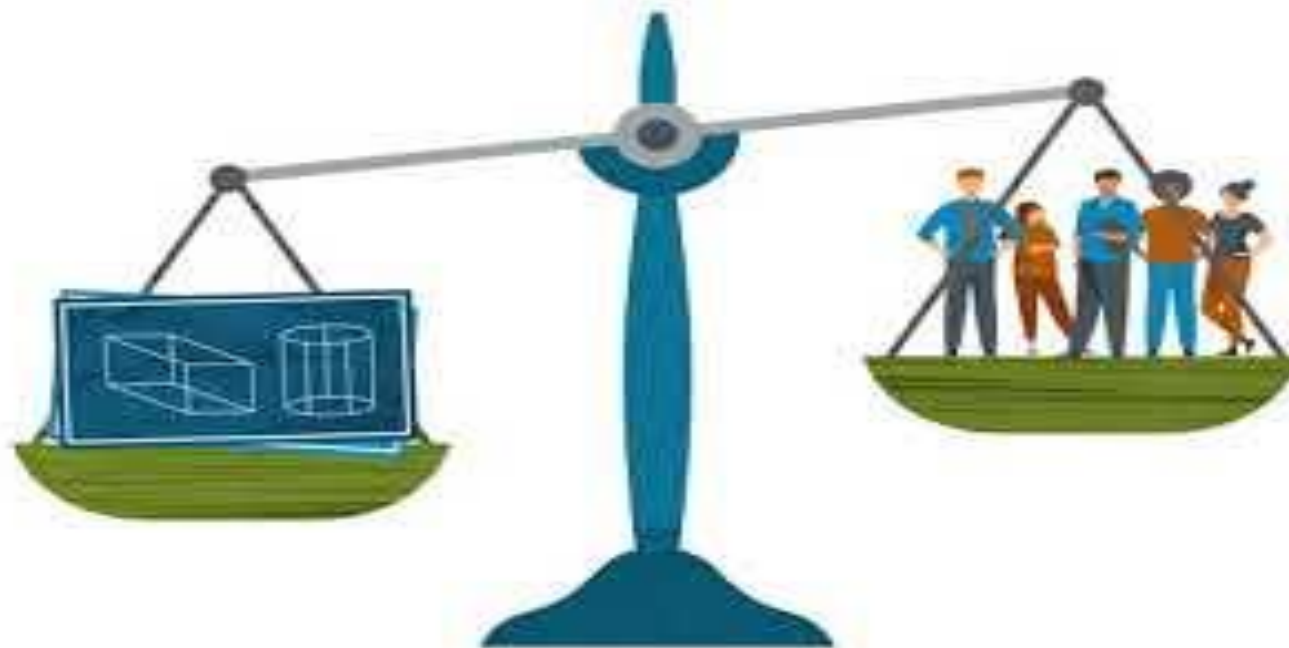




<https://youtu.be/uRnsYeyupjA>

# HOW WASTE IS, AND WOULD BE TRANSPORTED





<https://youtu.be/aDg7cPRjhp0>

# HOW IS WASTE REGULATED





<https://youtu.be/5wJ-kx8Mu9s>



# QUESTIONS OF CLARIFICATION

# GUIDELINES FOR PRODUCTIVE SESSION



Suspend judgment,  
challenge your own  
assumptions



Recognize and respect  
diverse perspectives



Look for common  
ground



Share the air time



Listen to understand

# HOW WASTE IS BEING MANAGED NOW, AND HOW IT COULD BE MANAGED OVER THE LONG-TERM





[https://youtu.be/Sg\\_4gYlgJ0w](https://youtu.be/Sg_4gYlgJ0w)



# BREAK-OUT DISCUSSION



**Safety as overarching principle**



**Informed by the best available knowledge**



**Environment is protected**



**Respect Indigenous rights and treaties**

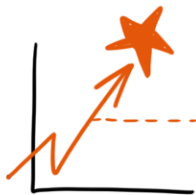


**Security must be ensured**

# GUIDING PRINCIPLES



**Be transparent and inform and engage the public**



**Make use of existing projects**



**Fiscally responsible**



**Meets or exceeds regulatory requirements**



# DISCUSSION

# RECAP

**High level radioactive waste** primarily made up of used nuclear fuel - a long-term plan is in place

**Uranium mine and mill waste** - disposal facilities are in operation at or near the location generated

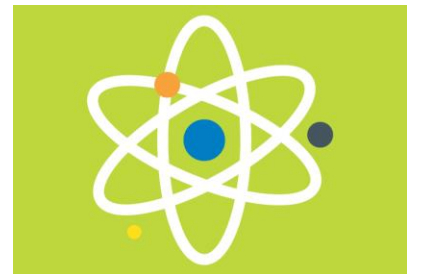
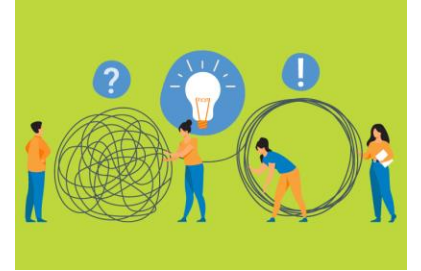
**No gaps exist**

Gaps exist for L&ILW waste so let's focus on that

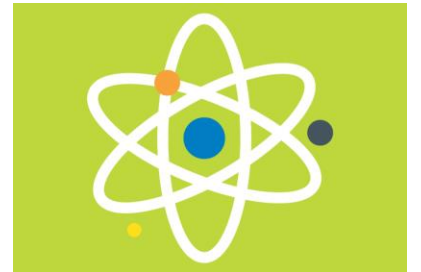
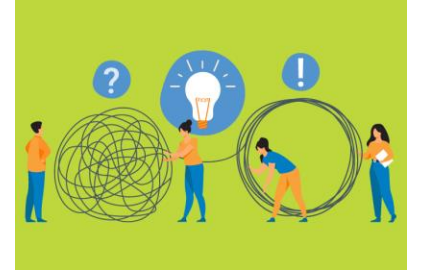
**Low-level and intermediate-level radioactive waste:**  
some long-term planning is underway

**but several gaps exist**

**Intermediate-level waste:** no long-term management plans in place for any of Canada's intermediate-level waste  
**this is also a gap in the system.**



How do we best deal with Canada's  
**Low-Level Waste**, and **Intermediate-Level Waste** over the long-term?





# SUMMARY OF DISCUSSION

# GET INVOLVED



Register for updates



Tell us what you'd like to discuss




Learn More




Engage with others

[www.radwasteplanning.ca](http://www.radwasteplanning.ca)

 Log In Français

Search



### Help us create a safe, integrated, long-term strategy for radioactive waste in Canada

Share your thoughts on the best options to ensure all of Canada's radioactive waste is managed safely, responsibly, and effectively long after we're gone

Canada is safely managing its radioactive waste today and already has several long-term plans and projects in place. However, there are some gaps in addressing certain streams, specifically low-level and intermediate-level radioactive waste, that need an integrated, long-term strategy. The Nuclear Waste Management Organization (NWMO) has been asked by the Minister of Natural Resources Canada to lead the development of this strategy by engaging with Canadians and Indigenous peoples.

We are planning a series of interactive, accessible and collaborative engagements that welcome a diversity of voices. Your thoughts and perspective play an important role in identifying the best approach to ensure all of Canada's radioactive waste is managed safely, responsibly and effectively long after we're gone.

Join us as we explore what's most important to Canadians and Indigenous peoples on this topic and help us shape Canada's strategy. [See the timeline.](#)


[Participate by completing our survey on ISRW](#)

#### Stay Informed

Follow us on Twitter: [@RadWastePlan](#)


[Register to receive news and invitations](#)

#### Current participation opportunities




**Public Engagement on the Integrated Strategy for Radioactive Waste (ISRW)**

Look here for information on upcoming live events as well as a record of past events




**Canadian Radioactive Waste Summit**

Learn more about the Canadian Radioactive Waste Summit.




**Indigenous Relations**

We are committed to long-lasting relationships with Indigenous peoples built upon communication, transparency, respect and reconciliation. We will engage with Indigenous peoples on the Integrated Strategy on Radioactive Waste (ISRW), and ensure all participants are provided the opportunity to provide input and advice.




**What Would You Like to Discuss?**

To help inform our engagement plans, please tell us what you would like to discuss



**Learn More**

Frequently asked questions and answers

 Nuclear Waste Management Organization

[Privacy](#) [Cookies](#) [Terms of Use](#) [NWMO Community Guidelines](#) [Contact Us](#)

